

S:\RDEIR_EIS_RecircAppendix_Mapbooks\REIS_Mapbook_48k_Index_SDE_10_5.mxd 2018522

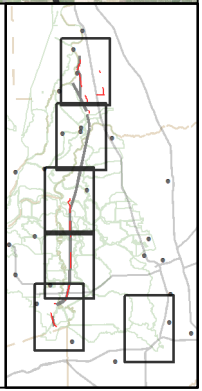
- Legend**
- Interstate
 - State Highway/Route
 - Railroad
 - Plan Area
 - Areas of Additional Analysis (Outside of Legal Delta; for Power Only)
 - Water

- Proposed Power**
- Substation
 - Capacitor Bank Substation
 - Interconnection Point
- Proposed Power**
- Permanent OH Transmission Line
 - Temporary OH Transmission Line

- Conveyance Construction Footprint**
- Permanent Subsurface Impact
- Temporary Surface Impact**
- Geotechnical Exploration Zone
 - Work Area
 - Other
- Permanent Surface Impact**
- Canal
 - Reusable Tunnel Material Area
 - Other

*Surface impacts are not expected to result from subsurface features.

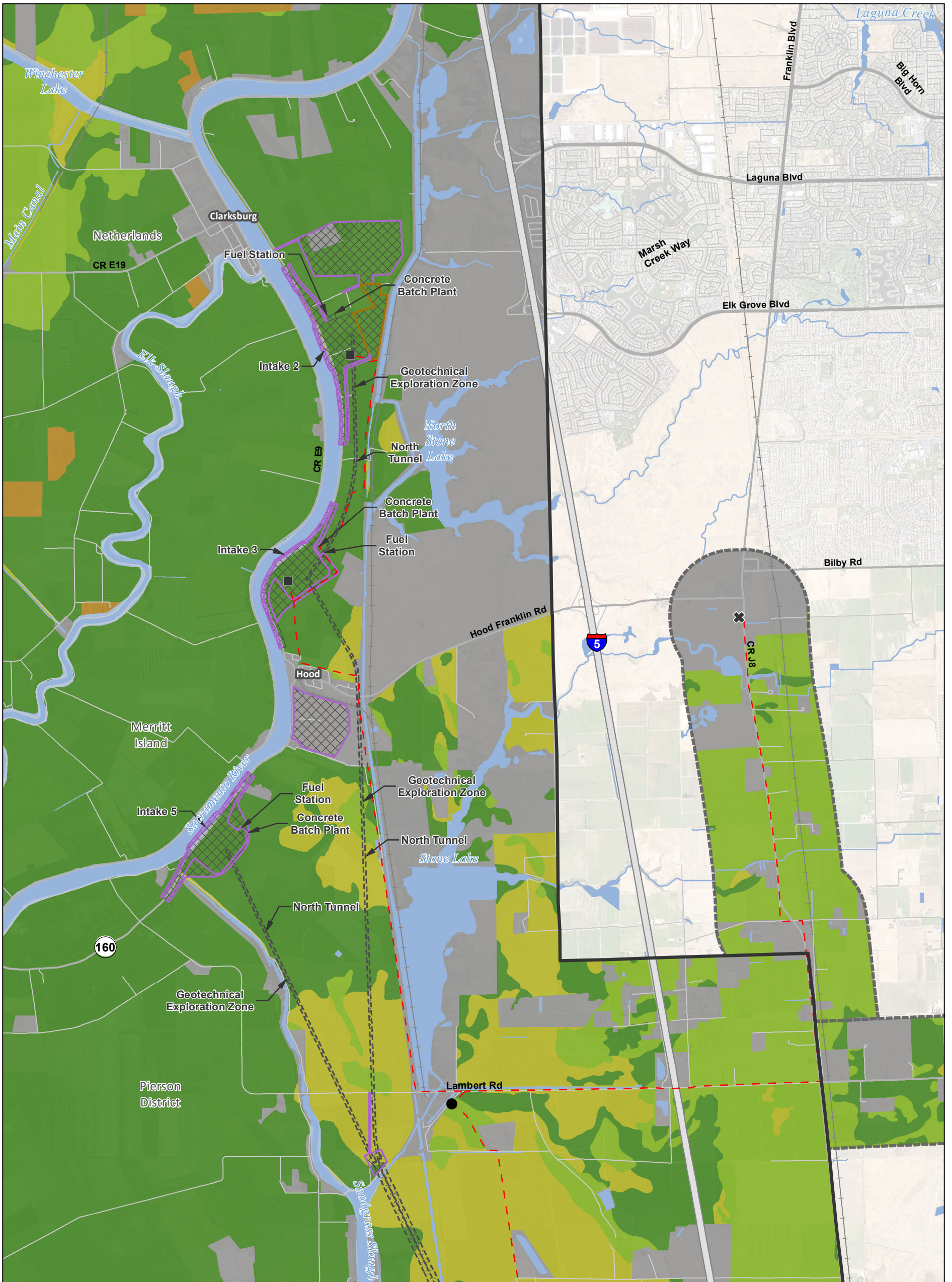
**In-river features are not a permanent impact to navigation.



Sources: DWR CWF Engineering (rev 1e 2018); NAIP 2016

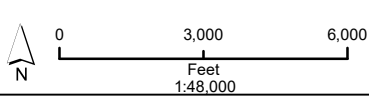
DRAFT: 29 May 2018

Figure M14-5: Index Important Farmland - Proposed Project

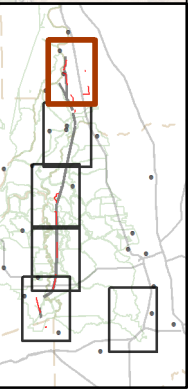


Legend

- | | | | |
|--|---------------------------------|--------------------------------|----------------------------------|
| Plan Area | Work Area | Proposed Power | Important Farmland |
| Areas of Additional Analysis | Other | Substation | Prime Farmland |
| Conveyance Construction Footprint | Permanent Surface Impact | Capacitor Bank Substation | Farmland of Statewide Importance |
| Permanent Subsurface Impact | Canal | Interconnection Point | Unique Farmland |
| Temporary Surface Impact | Reusable Tunnel Material Area | Permanent OH Transmission Line | Other Farmland |
| Geotechnical Planning Area | Other | Temporary OH Transmission Line | Other Lands |
| | | | Water |



*Surface impacts are not expected to result from subsurface features. **In-river features are not a permanent impact to navigation.

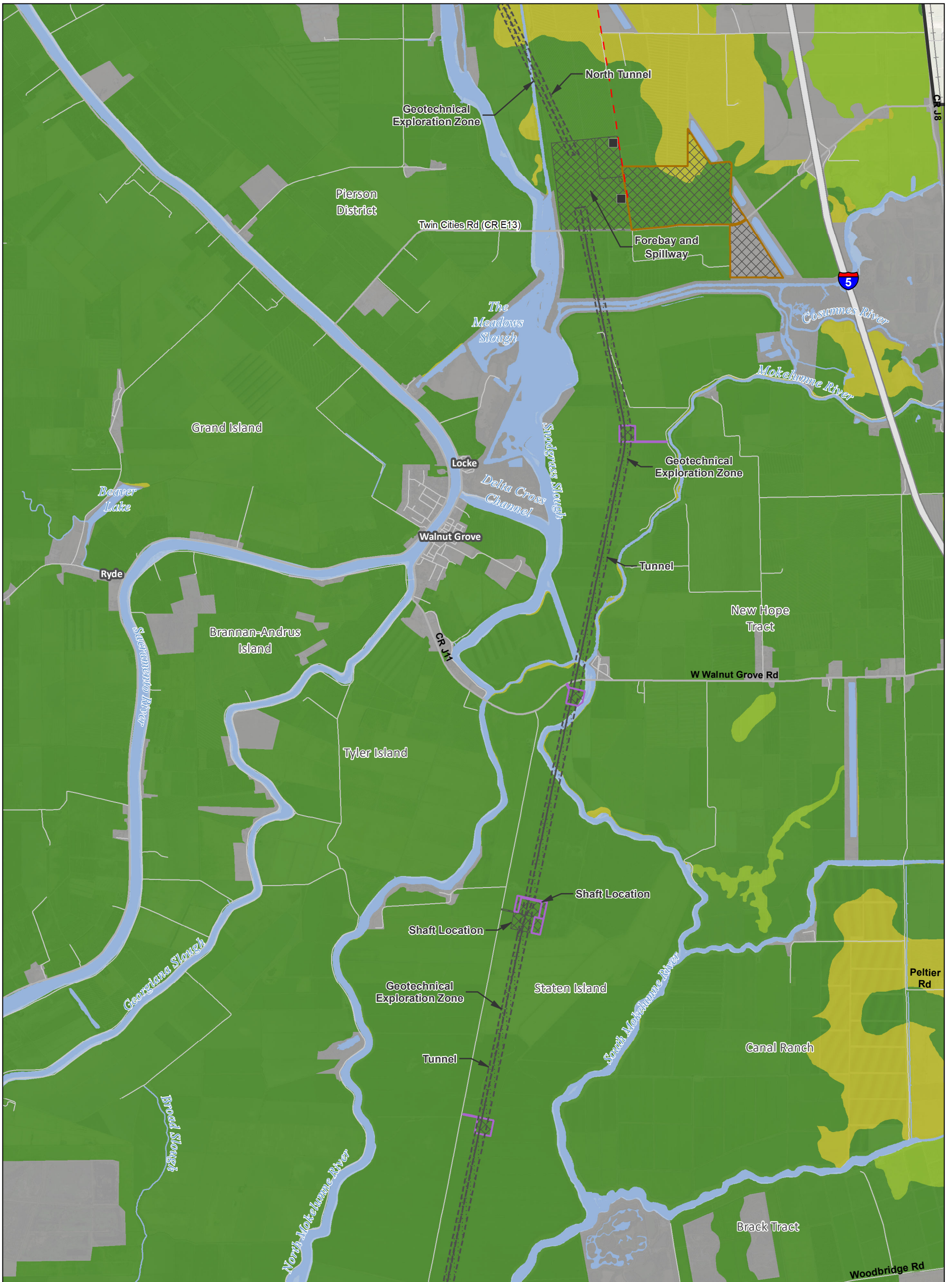


S:\RDEIR_EIS_Recirc\Appendix_Mapbooks\EIREIS_BTf_48K_Mapbook_SDE.mxd 2018529

Sources: Sources: DWR CWF Engineering (rev 1e 2018); NAIP 2016; Important Farmland, DOC 2018

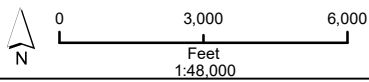
**Figure M14-5: Sheet 1 of 6
Important Farmland — Proposed Project**

DRAFT: 29 May 2018

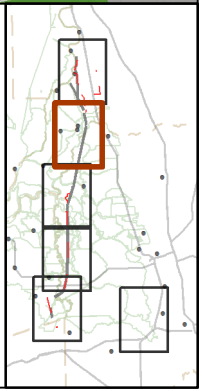


Legend

- | | | | |
|--|---------------------------------|--------------------------------|----------------------------------|
| Plan Area | Work Area | Proposed Power | Important Farmland |
| Areas of Additional Analysis | Other | Substation | Prime Farmland |
| Conveyance Construction Footprint | Permanent Surface Impact | Capacitor Bank Substation | Farmland of Statewide Importance |
| Permanent Subsurface Impact | Canal | Interconnection Point | Unique Farmland |
| Temporary Surface Impact | Reusable Tunnel Material Area | Permanent OH Transmission Line | Other Farmland |
| Geotechnical Planning Area | Other | Temporary OH Transmission Line | Other Lands |
| | | | Water |



*Surface impacts are not expected to result from subsurface features. **In-river features are not a permanent impact to navigation.



S:\RDEIR_EIS_Recirc\Appendix_Mapbooks\EIREIS_BTf_48K_Mapbook_SDE.mxd 2018529

Sources: Sources: DWR CWF Engineering (rev 1e 2018); NAIP 2016; Important Farmland, DOC 2018

Figure M14-5: Sheet 2 of 6 Important Farmland — Proposed Project

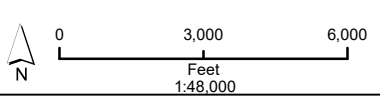
DRAFT: 29 May 2018



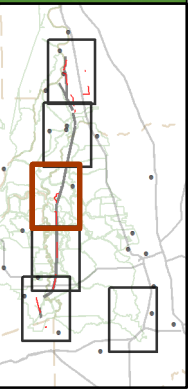
S:\RDEIR_EIS_Recirc\Appendix_Mapbooks\EIREIS_BTf_48K_Mapbook_SDE.mxd 20180529

Legend

- | | | | |
|--|---------------------------------|--------------------------------|----------------------------------|
| Plan Area | Work Area | Proposed Power | Important Farmland |
| Areas of Additional Analysis | Other | Substation | Prime Farmland |
| Conveyance Construction Footprint | Permanent Surface Impact | Capacitor Bank Substation | Farmland of Statewide Importance |
| Permanent Subsurface Impact | Canal | Interconnection Point | Unique Farmland |
| Temporary Surface Impact | Reusable Tunnel Material Area | Permanent OH Transmission Line | Other Farmland |
| Geotechnical Planning Area | Other | Temporary OH Transmission Line | Other Lands |
| | | | Water |



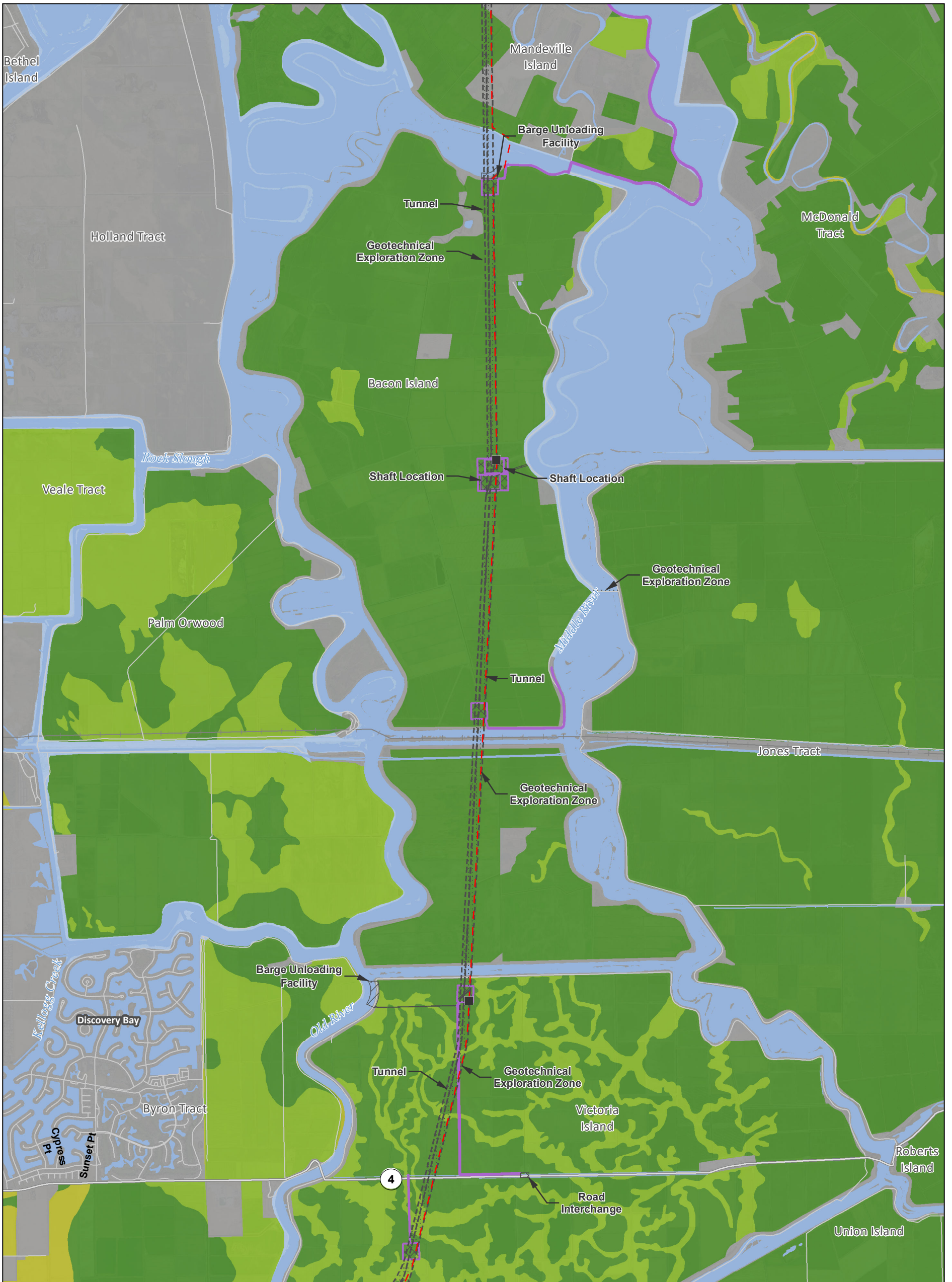
*Surface impacts are not expected to result from subsurface features. **In-river features are not a permanent impact to navigation.



Sources: Sources: DWR CWF Engineering (rev 1e 2018); NAIP 2016; Important Farmland, DOC 2018

Figure M14-5: Sheet 3 of 6 Important Farmland — Proposed Project

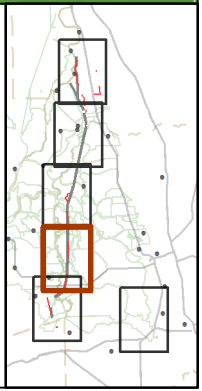
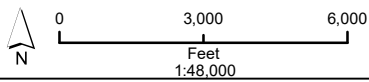
DRAFT: 29 May 2018



S:\RDEIR_EIS_Recirc\Appendix_Mapbooks\EIREIS_BTf_48K_Mapbook_SDE.mxd 2018529

Legend Plan Area Areas of Additional Analysis Permanent Subsurface Impact Temporary Surface Impact Geotechnical Planning Area		Work Area Other Canal Reusable Tunnel Material Area Other		Proposed Power Substation Capacitor Bank Substation Interconnection Point Permanent OH Transmission Line Temporary OH Transmission Line		Important Farmland Prime Farmland Farmland of Statewide Importance Unique Farmland Other Farmland Other Lands Water	
---	--	---	--	---	--	--	--

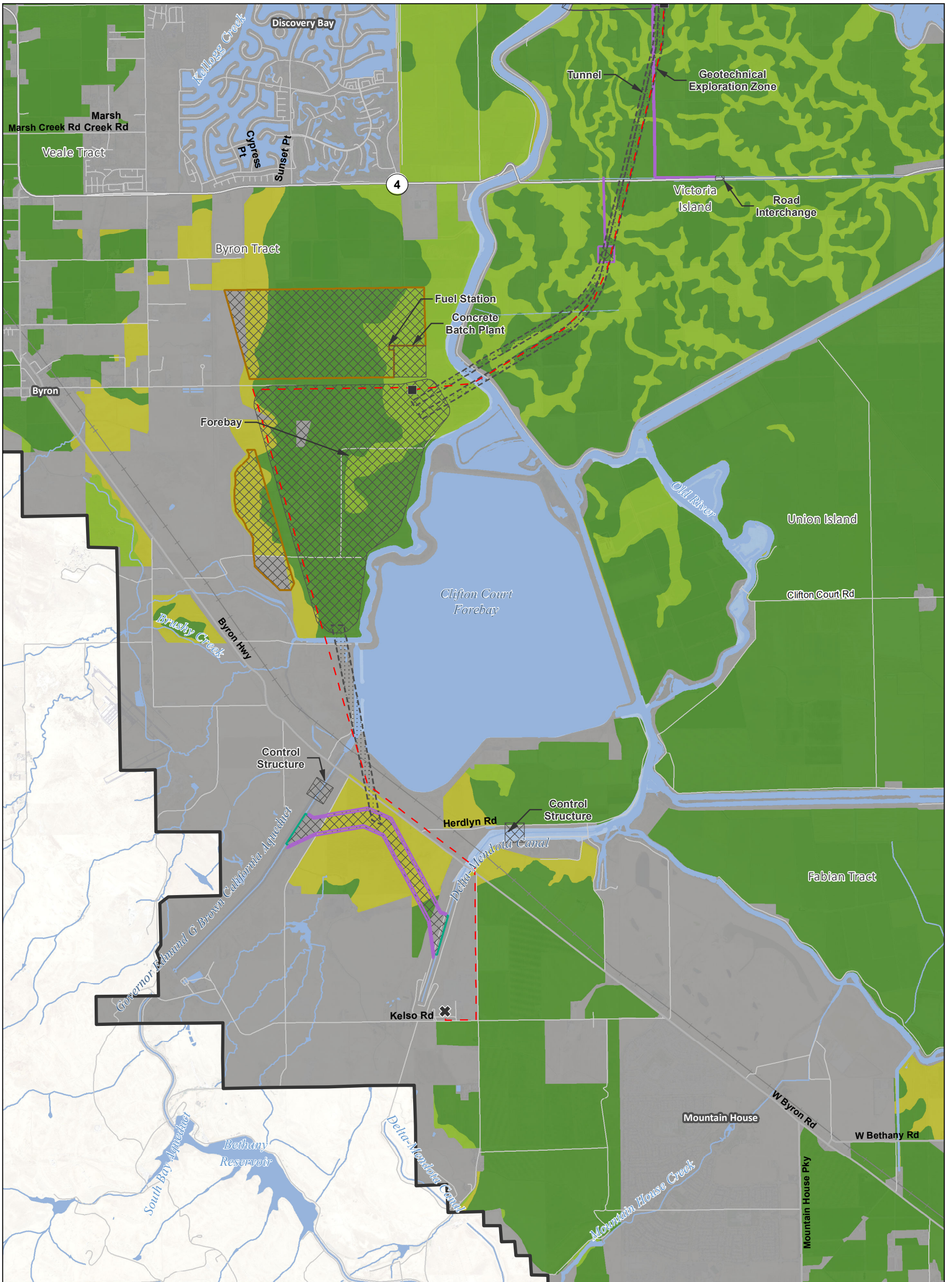
*Surface impacts are not expected to result from subsurface features. **In-river features are not a permanent impact to navigation.



Sources: Sources: DWR CWF Engineering (rev 1e 2018); NAIP 2016; Important Farmland, DOC 2018

Figure M14-5: Sheet 4 of 6
Important Farmland — Proposed Project

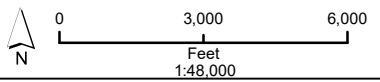
DRAFT: 29 May 2018



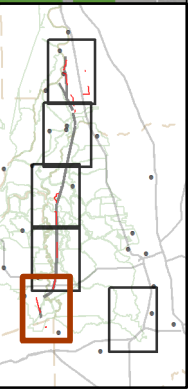
S:\RDEIR_EIS_Recirc\Appendix_Mapbooks\EIREIS_BTf_48K_Mapbook_SDE.mxd 20180529

Legend

- | | | | |
|--|---------------------------------|--------------------------------|----------------------------------|
| Plan Area | Work Area | Proposed Power | Important Farmland |
| Areas of Additional Analysis | Other | Substation | Prime Farmland |
| Conveyance Construction Footprint | Permanent Surface Impact | Capacitor Bank Substation | Farmland of Statewide Importance |
| Permanent Subsurface Impact | Canal | Interconnection Point | Unique Farmland |
| Temporary Surface Impact | Reusable Tunnel Material Area | Permanent OH Transmission Line | Other Farmland |
| Geotechnical Planning Area | Other | Temporary OH Transmission Line | Other Lands |
| | | | Water |



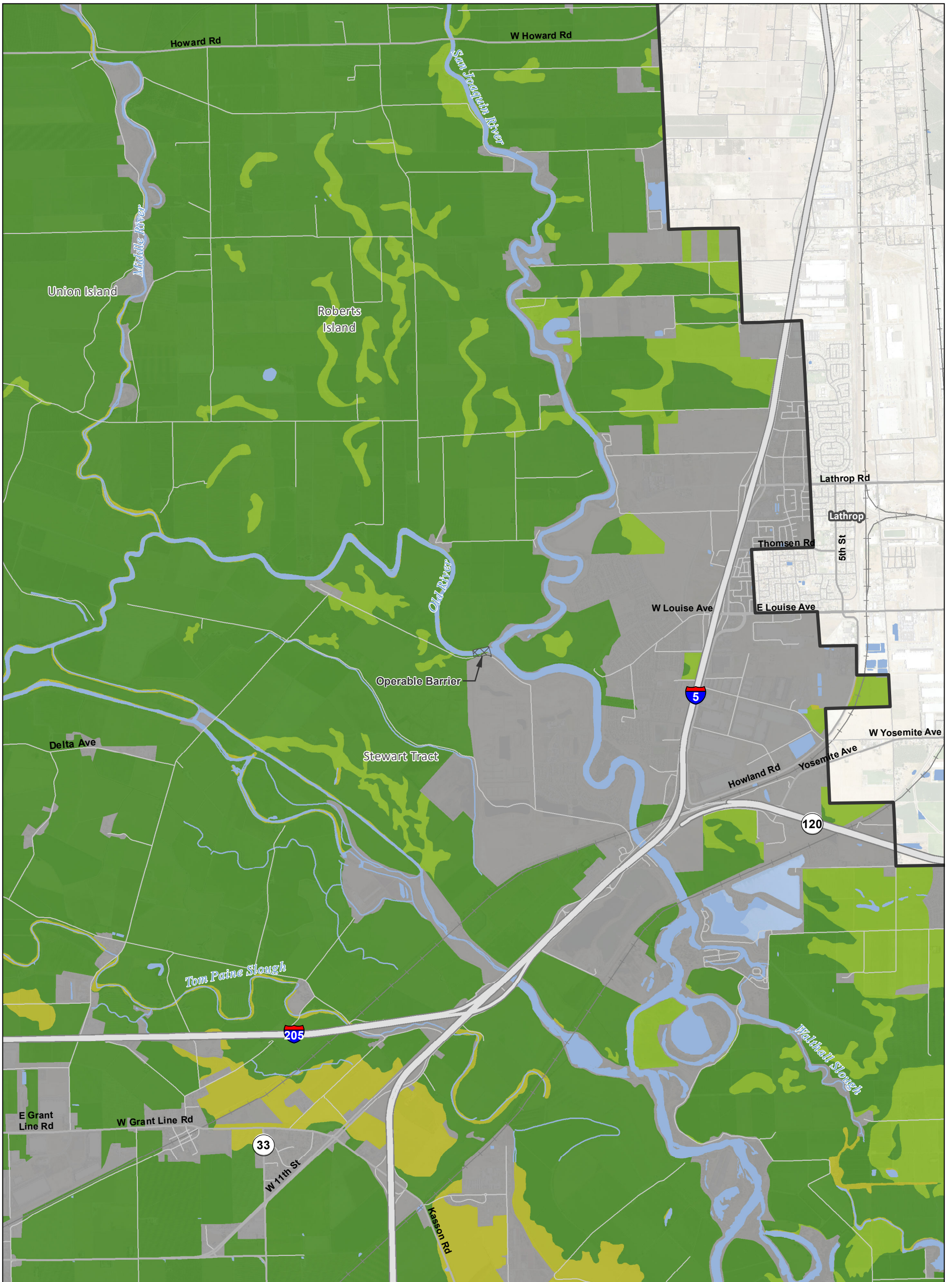
*Surface impacts are not expected to result from subsurface features. **In-river features are not a permanent impact to navigation.



Sources: Sources: DWR CWF Engineering (rev 1e 2018); NAIP 2016; Important Farmland, DOC 2018

Figure M14-5: Sheet 5 of 6 Important Farmland — Proposed Project

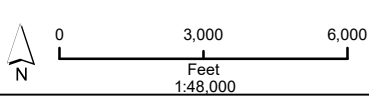
DRAFT: 29 May 2018



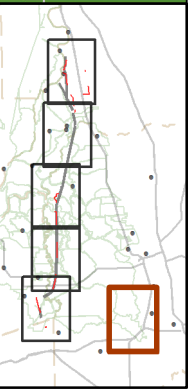
S:\RDEIR_EIS_Recirc\Appendix_Mapbooks\EIREIS_BTf_48K_Mapbook_SDE.mxd 2018529

Legend

- | | | | |
|--|---------------------------------|--------------------------------|----------------------------------|
| Plan Area | Work Area | Proposed Power | Important Farmland |
| Areas of Additional Analysis | Other | Substation | Prime Farmland |
| Conveyance Construction Footprint | Permanent Surface Impact | Capacitor Bank Substation | Farmland of Statewide Importance |
| Permanent Subsurface Impact | Canal | Interconnection Point | Unique Farmland |
| Temporary Surface Impact | Reusable Tunnel Material Area | Permanent OH Transmission Line | Other Farmland |
| Geotechnical Planning Area | Other | Temporary OH Transmission Line | Other Lands |
| | | | Water |



*Surface impacts are not expected to result from subsurface features. **In-river features are not a permanent impact to navigation.



Sources: Sources: DWR CWF Engineering (rev 1e 2018); NAIP 2016; Important Farmland, DOC 2018

**Figure M14-5: Sheet 6 of 6
Important Farmland — Proposed Project**

DRAFT: 29 May 2018